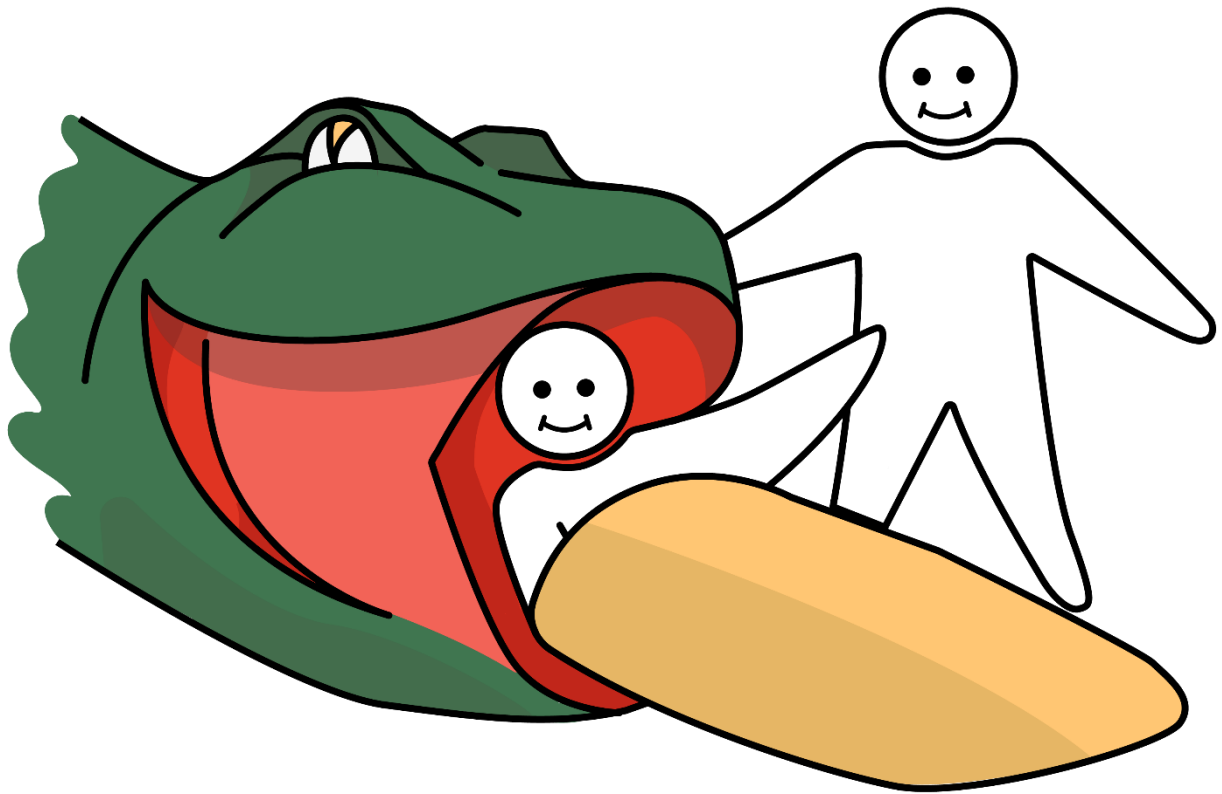
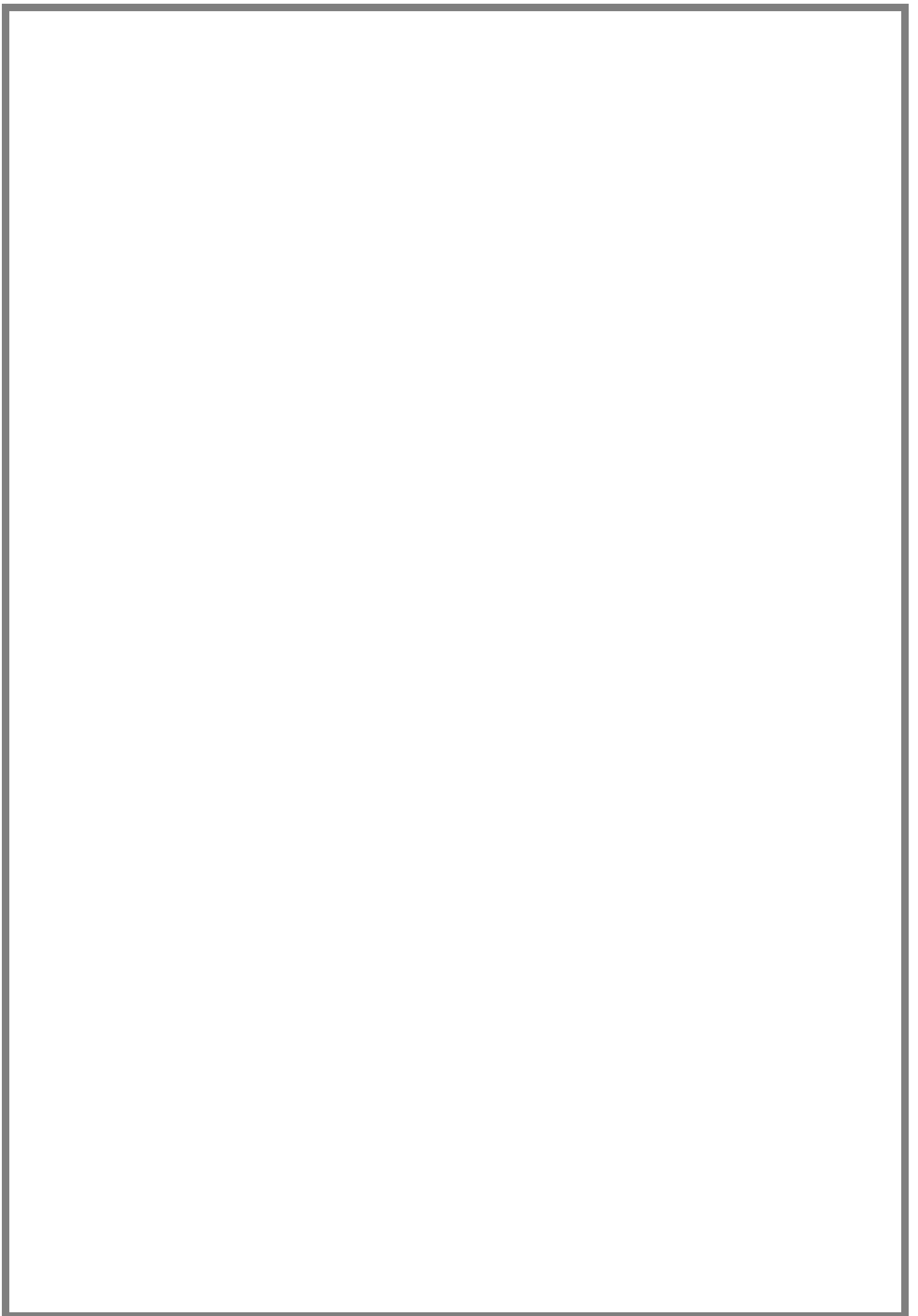


Tube Slide



I am going on the tube slide.



I will go to the tube slide hut.

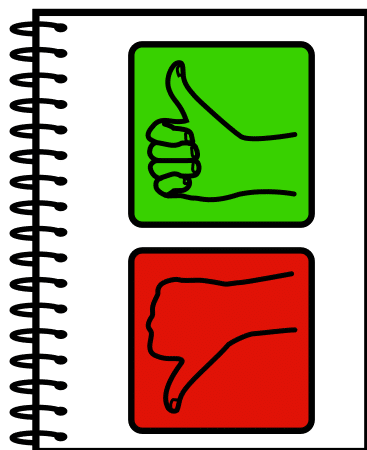


The tube slide is a long slide that goes from the top to the bottom of the hill.



The slide is dark. It twists and turns. Sometimes it is fast, sometimes it is slow.

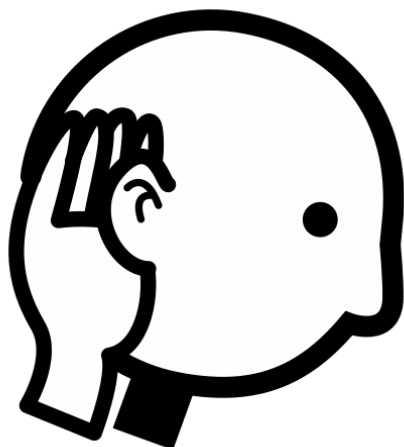
I will meet the Bendrigg tutor and other people. They will talk to me about the rules.



This is to keep me safe.



I need to listen carefully.



When it is my turn the Bendrigg tutor will ask me to sit on a blanket and they will wrap me in it, or I will climb into a sack.



It is important I stay in the blanket or sack so I slide well and so I don't get hurt. I must keep my arms in and lie down.

When I am ready the tutor will ask the person at the bottom if the tube is clear.



When it is clear they will gently push me down the tube slide.



At the bottom I will land on the mat.



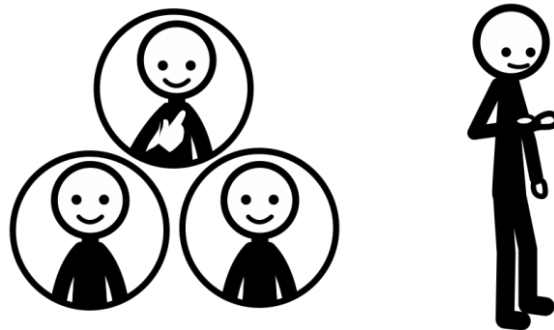
I will stand up, pick up my blanket or sack and walk up the path.

I may feel excited.



I may be able to have another go.

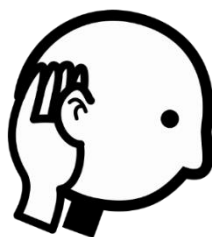
I will need to wait my turn.



I may feel worried, this is okay.



I need to remember I am safe if we all listen carefully and follow the rules. I can ask to stop.



When I have finished everyone will say
well done.



The Tube Slide is fun.



Written by Kate McCallum with support from

